



# MONTHLY MEMBERSHIP PROGRESS REPORT

District 8 S

Results as of: 5/31/2016

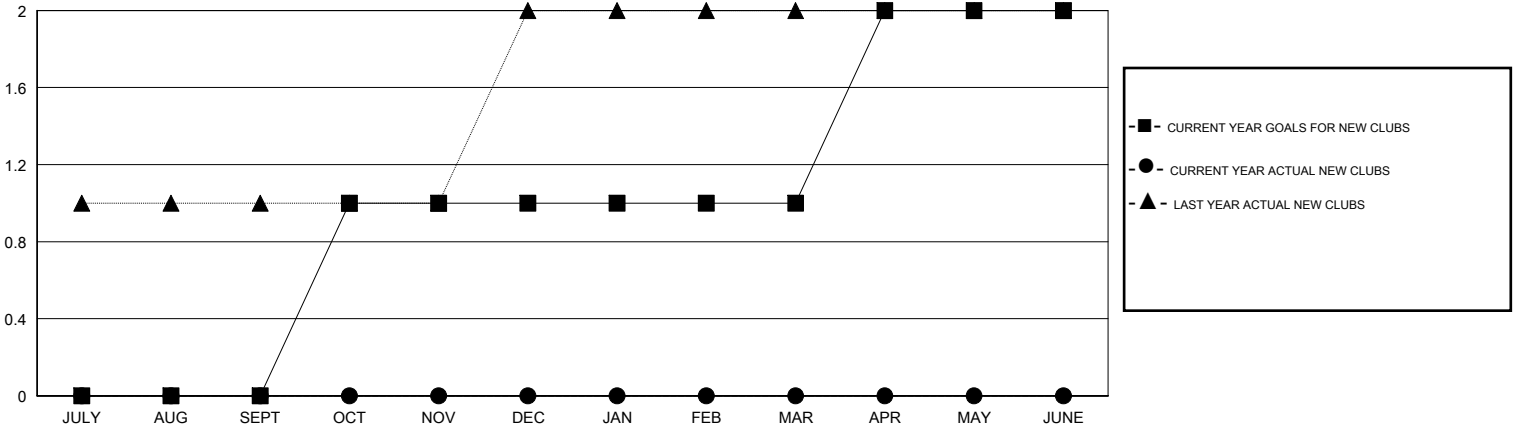
GMT: HAL GRIFFIN

LOCATION LOUISIANA

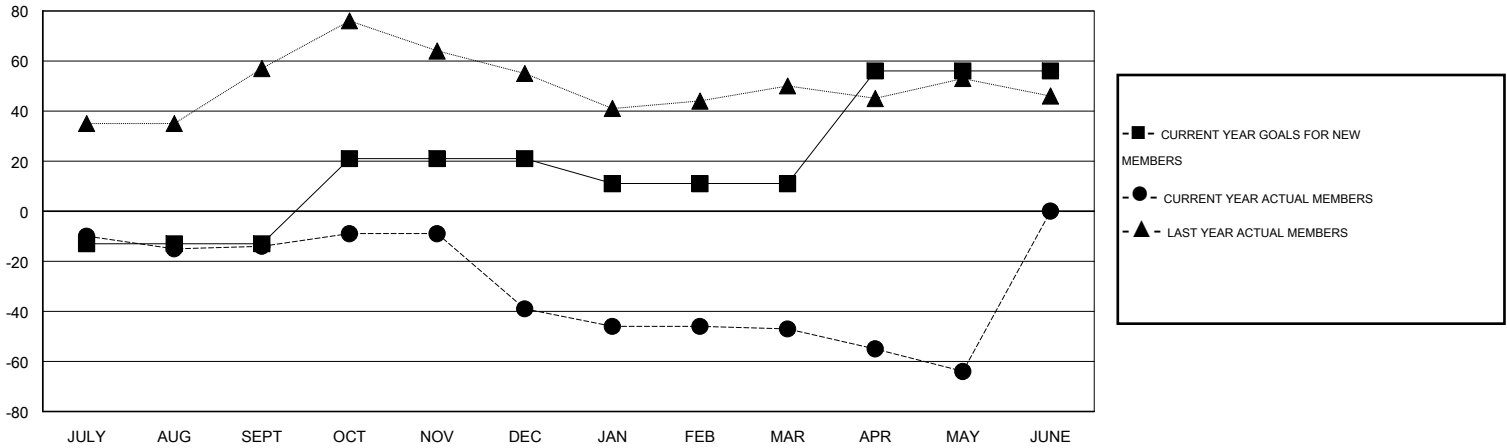
GMT CA 1

Clubs					Members				
RESULTS FOR 2015-2016					RESULTS FOR 2015-2016				
QUARTER	NEW CLUB GOAL	NEW CLUBS	DROPPED CLUBS	NET GAIN/LOSS	QUARTER	NEW MEMBER GOAL	CHARTER AND NEW MEMBERS ADDED	DROPPED MEMBERS	NET GAIN/LOSS
JULY/AUG/SEPT	0	0	0	0	JULY/AUG/SEPT	-13	35	49	-14
OCT/NOV/DEC	1	0	0	0	OCT/NOV/DEC	34	28	53	-25
JAN/FEB/MAR	0	0	0	0	JAN/FEB/MAR	-10	20	28	-8
APR/MAY/JUNE	1	0	0	0	APR/MAY/JUNE	45	12	29	-17

GOALS AND ACTUAL NEW CLUBS CUMULATIVE



GOALS AND ACTUAL MEMBERS CUMULATIVE



DROPPED CLUBS: 0	20 CLUBS OF 40 ADDED 1 OR MORE NEW MEMBERS	<u>GENDER DISTRIBUTION</u>
		MALE 658 (58.33%)
		FEMALE 470 (41.67%)
<u>DROPPED MEMBERS</u>	<a href="#">CLICK HERE FOR HEALTH ASSESSMENT DATA</a>	FAMILY UNIT MEMBERS 332
DECEASED 21		HEAD OF HOUSEHOLD 155
CLUB CANCELLED 0		NON-HEAD OF HOUSEHOLD 177
OTHER 138		
<b>TOTAL 159</b>		